



HARDWOOD PLYWOOD





**REAL BEAUTY.
REAL QUALITY.
REAL WOOD.**

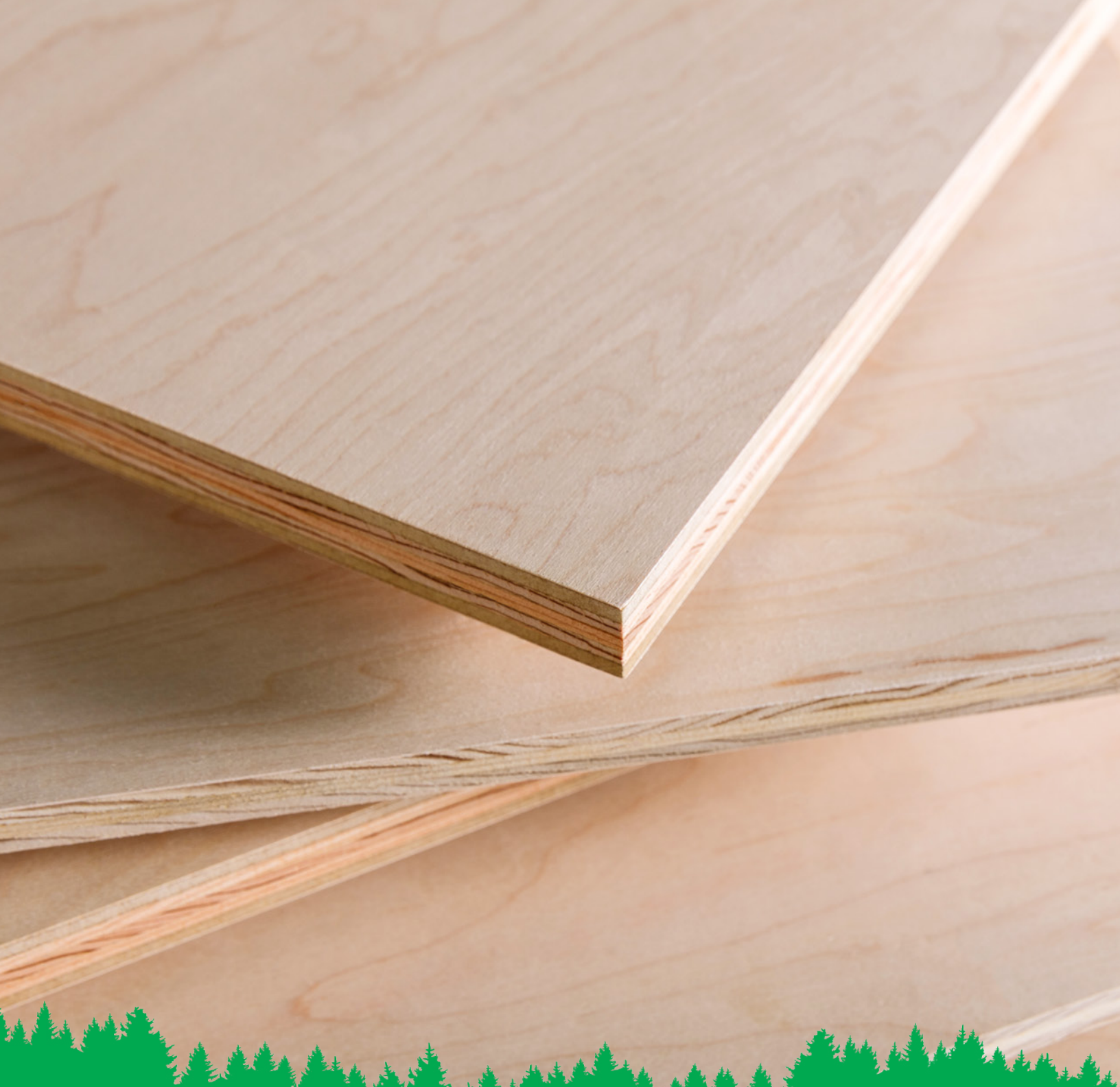
CONTENTS

SHOWCASE	4
HARDWOOD VENEERS	6
PROCESS	7
VENEER MATCHING	8
SOFTWOOD & HARDWOOD VENEER CORE . . .	9
TROPICAL VENEER & PRO-CORE	10
PARTICLEBOARD & MDF CORE	11
PHYSICAL PROPERTIES	12
RHINOCOAT™	14
CLEARING THE AIR	15

TIMBER PRODUCTS

Timber Products is one of the nation's largest and most respected manufacturers of a comprehensive range of wood products.

As an independently owned, fully integrated company with dedicated manufacturing facilities in the United States, we provide immediate access to a vast selection of products and services.



FalconPly™

FalconPly™ Hardwood Plywood.

It's as attractive as it is versatile, reflecting nature's understated beauty alongside technological breakthroughs. And for over 100 years, Timber Products has pioneered

hardwood plywood manufacturing, creating products that are unrivaled in quality, craftsmanship and environmental responsibility, all while

meeting the strictest emission requirements in North America.

When you're dedicated to providing the most impressive hardwood plywood on the planet, you take the entire process seriously. As one of the nation's largest independently owned hardwood plywood manufacturers, we control every step in producing our premier **FalconPly**. It's something we like to call vertical integration.

BUILD WITH PURPOSE

ENGINEERED TO YOUR SPECIFIC NEEDS.

SPECIES

Our products are made from a variety of tree species including Maple, White Oak, Alder, Walnut, and many more!

GRADE

Depending on the panel, a variety of face and back grades are available. We can also create **Custom Grades** tailored to your requirements.

FINISH

RhinoCoat prefinish available, see page 14 for more details.

THICKNESS

Thicknesses can range from 5/32" through 1-1/2" and allow for customization.

DIMENSIONS

All panels are available as 4' widths with 8', 9' and 10' lengths. **Cut-to-size** custom cuts are available as well.

It means that each and every product that bears our name is designed and engineered to the highest standards. Sourcing from responsibly managed timberlands, to the eight manufacturing mills we own and operate across the nation, to utilizing our transportation operations for logistics and trucking of products, our quality is never left to chance.

It's this obsessive commitment to excellence that allows Timber Products to offer unequalled quality and the industry's best service, and to remain a vital resource, not only for our customers, but also for the environment.

NOTHING COMPARES TO THE TIMELESS BEAUTY OF NATURAL WOOD.

That's why Timber Products' **FalconPly™** features real wood veneers handpicked by seasoned professionals. It takes more time, but there's just no comparison to the precision of an experienced eye, carefully scanning each and every piece of hardwood veneer to ensure it exemplifies the rich character, grade and appearance of each species.

As a leading manufacturer of hardwood plywood in the United States, we have three hardwood plywood mills, two in Southern Oregon, one in Mississippi, and even have our own hardwood veneer mill in upper Michigan.

In addition to our mills, we also have an import division and strong vendor relationships, which allow us to stock a wide range of species in many cuts and grades.

Our compliance team goes above and beyond to ensure that everyone throughout our supply chain is conducting their due diligence to only source sustainable and compliant veneer, which not only safeguards ourselves and our customers from any legal risks, but also promotes sustainable and ethical harvesting.

Timber Products hardwood plywood is available in many species and whether you need 8' panels, 10' panels, or a mix of both, one of our graders will hand-sort your whole order to ensure consistency.

Experience the unmatched quality of Timber Products' **FalconPly™** — contact us today to find the perfect hardwood plywood for your needs!



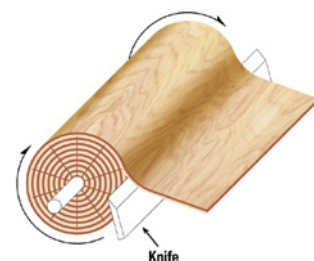
IT ALL COMES DOWN TO THE GRAIN.

Whether it's red oak, maple or an exotic like anegre, a hardwood's grain is responsible for its unmistakable beauty and appeal. Which means consistency and quality are paramount when it comes to producing hardwood veneers. That's why Timber Products uses four unique processes to produce a range of wood patterns that are graded and sorted by hand, ensuring a reliable grain pattern on each and every panel.

ROTARY

The log is centered in the lathe and turned against a knife blade at a slight angle following the log's annular growth rings, producing a multi-patterned grain veneer.

Ideal for: Large surface applications where a broad grain pattern will suffice. Rotary cut sheets are generally less expensive than sliced veneer and can yield whole piece face sheets.



QUARTER SLICING

Produces a narrow, striped grain veneer where the growth rings of the log strike the blade at approximately right angles. Some species will create a series of straight stripes, while others' stripes may be varied in angle and length. Red and white oak produce a pronounced flake pattern when quarter sliced, while mahogany creates a ribbon stripe pattern.

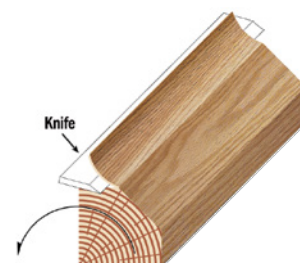
Ideal for: Mission-style or other applications requiring a uniform appearance with generous ray flaking. More cost-effective than rift-cutting.



RIFT CUT

Produces a rift or comb grain effect similar to that of quarter slicing, but generally is only used with red and white oak. This process minimizes ray flake as the log is cut at an angle of about 15 percent off the quartered position.

Ideal for: An application calling for uniform white or red oak appearance without ray flake. Generally higher in cost due to low yields.



PLAIN SLICING OR FLAT CUT

The most common slicing method that produces a distinct cathedral grain veneer. A half log, or flitch, is mounted so that the veneer is cut along the growth rings, parallel to a line through the center of the log.

Ideal for: Any application where an eye-catching pattern is desired at an affordable cost; of the slicing methods, plain slicing is the least expensive.



veneer matching

Our hardwood veneer facility in Munising, Michigan, manufactures beautiful maple and other hardwood veneers under stringent quality control measures. With high-end splicing and pressing technology, we have expanded the range of applications for spliced veneer.

pleasing match

Veneer sheets are carefully selected and arranged to create a visually appealing pattern. Unlike perfect symmetry, such as in book matching, pleasing matching prioritizes an aesthetically harmonious design that may not necessarily be symmetrical but still achieves a balanced and cohesive look.



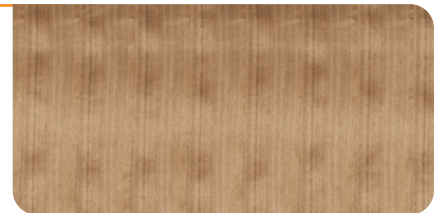
book match

Veneer cut from the same log are arranged side by side in a way that creates a mirrored or symmetrical pattern. This is achieved by flipping consecutive veneer sheets like the pages of a book, aligning the grain patterns to create a visually striking design.



slip match

Consecutive sheets of veneer are laid side by side in the same orientation, creating a uniform and consistent pattern. This method ensures that the grain and figure of the wood appear continuous across the sheets, as if they were “slipped” off the same log in sequence and avoids the alternating light and dark patterns that can occur with other methods like book matching.



plank match

The sheets of veneer are arranged without following a specific sequence or grain alignment. This method creates a more natural and varied appearance, mimicking the irregular patterns found in solid wood.



whole piece

Unlike other veneering methods where smaller pieces are joined together, whole piece veneers are cut from a single section of the log, ensuring uniformity and a seamless, continuous grain pattern. This makes it ideal for applications where a flawless, high-end finish is desired, such as in cabinetry, furniture, and decorative paneling.



VENEER CORE

SOFTWOOD

- White fir and Douglas fir
- One of the industry's finest softwood veneer cores using trees harvested from responsibly managed forest lands and peeled at our facility.
- The quality of our softwood veneer yields a core that is consistent in thickness and a wood veneer laminating surface that is second to none.
- Can be calibrated upon request.



HARDWOOD

- Southern poplar
- Our premium hardwood veneer core is lightweight and offers excellent dimensional stability, making it a popular choice for cabinetry, furniture and interior applications. It provides a good balance of durability, workability, and cost-effectiveness.



TROPICAL VENEER CORE & PRO-CORE

TROPICAL

- Fuma
- Higher density
- Calibrated
- Known for its durability, strength and smooth finish, fuma's uniform composition ensures excellent stability and resistance to warping.



PRO-CORE

- Pro-Core MDF uses MDF crossbands and a veneer core interior to deliver the best performance of any core material we offer.
- The MDF face and back offer the best laminating surface, and the veneer core delivers the best physical properties and lighter weight.
- Can be calibrated upon request.



PARTICLEBOARD & MDF CORE

PARTICLEBOARD CORE

- Commercial and industrial pine and fir
- Our specially engineered particleboard core provides the perfect density on the face and back to accept laminates of all kinds, and a core that delivers physical properties to make it a workhorse for many applications.



MEDIUM-DENSITY FIBERBOARD CORE (MDF)

- Our medium-density fiberboard core can be machined to the finest tolerances without chipping.
- Provides an exceptional laminating surface that is smooth, hard and consistent throughout the panel.



PHYSICAL PROPERTIES

Properties	Softwood Veneer Core	Hardwood Veneer Core	Tropical Veneer Core
Wood Species	Douglas Fir, Hemlock, Pine, White Fir, Balsam, Larch, etc.	Poplar	Douglas Fir, Hemlock, Pine, White Fir, Fuma
Number of Plies ¾" Panel	7	7	7
Blanks or 1 Step	Both	Blank	Both
HPVA Core Grade	K or L	K or L	K or L
Size	4x6, 4x8, 4x10	4x8	4x6, 4x8, 4x10
Oversize Availability?	Yes	Yes	Yes
Dimensional Stability	Good	Good	Good
Finished Tolerance (DHA)	+0/- .047	+0/- .047	+0/- .047
Density	31±5 pcf	31±5 pcf	26±5 pcf
MOR (Perpendicular to the Face)	6000+ psi	6000+ psi	3200+ psi
MOR (Parallel to the Face)	5000+ psi	5000+ psi	3500+ psi
MOE (Perpendicular to the Face)	900,000+ psi	900,000+ psi	415,000+ psi
MOE (Parallel to the Face)	700,000+ psi	700,000+ psi	450,000+ psi
Screw Hold (Face)	350 lbs	250 lbs	250 lbs
Screw Hold (Edge)	300 lbs	200 lbs	240 lbs
Water Absorption (% 24hrs)	N/A	N/A	N/A
Thickness Swell (% 24hrs)	N/A	N/A	N/A
Janka Hardness	741 lbs	700 lbs	400 lbs
Wt./M ft ²	965 lbs	965 lbs	827 lbs
Glue Chemistry	ULEF	Soy	ULEF
Formaldehyde Fuming Ave (ULEF)	Below .05ppm	Below .05ppm	Below .05ppm
Formaldehyde Standard	CARB Phase 2 and TSCA Title VI Certified		
Flame Spread Rating	Class C		
Environmental Certification	FSC, Environmental Product Declaration Available		

Note: All physical properties change from panel to panel depending on the natural characteristics of the wood used to make the panel.

Properties	Pro-Core	Particleboard Core	MDF Core
Wood Species	Douglas Fir, Hemlock, Pine, White Fir, Balsam, Larch, etc.	Fir/Pine	Fir/Pine
Number of Plies ¾" Panel	7 or 9	3	3
Blanks or 1 Step	Both	Blank	Blank
HPVA Core Grade	K or L	N/A	N/A
Size	4x6, 4x8, 4x10	4x6, 4x8, 4x10	4x6, 4x8, 4x10
Oversize Availability?	Yes	Yes	Yes
Dimensional Stability	Very Good	Excellent	Very good
Finished Tolerance (DHA)	+0/- .047	+0/- .047	+0/- .047
Density	40±5 pcf	46±5 pcf	42±5 pcf
MOR (Perpendicular to the Face)	4900+ psi	3300+ psi	1300+ psi
MOR (Parallel to the Face)	7800+ psi	6400+ psi	4500+ psi
MOE (Perpendicular to the Face)	485,000+ psi	405,000+ psi	320,000+ psi
MOE (Parallel to the Face)	900,000+ psi	850,000+ psi	630,000+ psi
Screw Hold (Face)	345 lbs	240 lbs	240 lbs
Screw Hold (Edge)	200 lbs	250 lbs	200 lbs
Water Absorption (% 24hrs)	16.7%	8%	13.1%
Thickness Swell (% 24hrs)	4.3%	3.2%	3.9%
Janka Hardness	779 lbs	1044 lbs	794 lbs
Wt./M ft ²	1258 lbs	1437 lbs	1319 lbs
Glue Chemistry	ULEF	ULEF	ULEF
Formaldehyde Fuming Ave (ULEF)	Below .05ppm	Below .05ppm	Below .05ppm
Formaldehyde Standard	CARB Phase 2 and TSCA Title VI Certified		
Flame Spread Rating	Class C		
Environmental Certification	FSC, Environmental Product Declaration Available		

Note: All physical properties change from panel to panel depending on the natural characteristics of the wood used to make the panel.

RHINOCOAT™

Manufactured using an ultraviolet curing technology, Timber Products' RhinoCoat™ prefinished panels provide you with a durable surface for low-wear applications that won't show any effect from common household chemicals, foods or solvents, with an added benefit of antimicrobial* properties.

UV curing is one of the most environmentally conscious ways to finish a product, containing no formaldehyde

and no harmful volatile organic compounds (VOCs). By reducing the need for on-site spray finishing and drying in low-wear applications, RhinoCoat prefinished hardwood panels can help you increase your throughput, reduce factory emissions, enhance quality and improve overall manufacturing efficiency by allowing finishing labor to focus on more critical areas of production.

INFO / DETAILS

- **Size:** Any size up to 4' x 10'
- **Thickness:** 5/32" up to 1-1/2"
- **Veneer Species:** Any
- **Core Material:** Veneer Core, Pro-Core, Particle Board Core, MDF Core
- **Sheen Level:** Satin (10-20%) or Medium Gloss (30-40%)

Applications

- Cabinets
- Furniture
- Drawers
- Interior Shelving
- Other Low-Wear Applications

Certifications

- Available as FSC®
- SEFA compliant upon request



RhinoCoat panels are also treated with antimicrobial technology specifically formulated to mitigate the growth of certain microorganisms to protect the structural integrity of the panels. This finish can inhibit the growth of microbes such as fungus (mold and mildew) that may cause unpleasant odors, degradation, discoloration, decay and staining of the panels. Our test results show up to 99.992% of the microbial load was reduced!

This preservative is used for its properties that protect the surface of panels from microbial growth and is widely used across many industries.

However, RhinoCoat panels do not protect users and others against bacteria, viruses, germs or other disease organisms. Users should always clean this product thoroughly before and after each use.

CLEARING THE AIR

For more than 100 years, Timber Products has pioneered hardwood plywood manufacturing. Today, all of our FalconPly™ is environmentally certified, follows the strictest emission requirements in North America and features a specific UL Environmental Product Declaration (EPD) (4790500569.105.1).

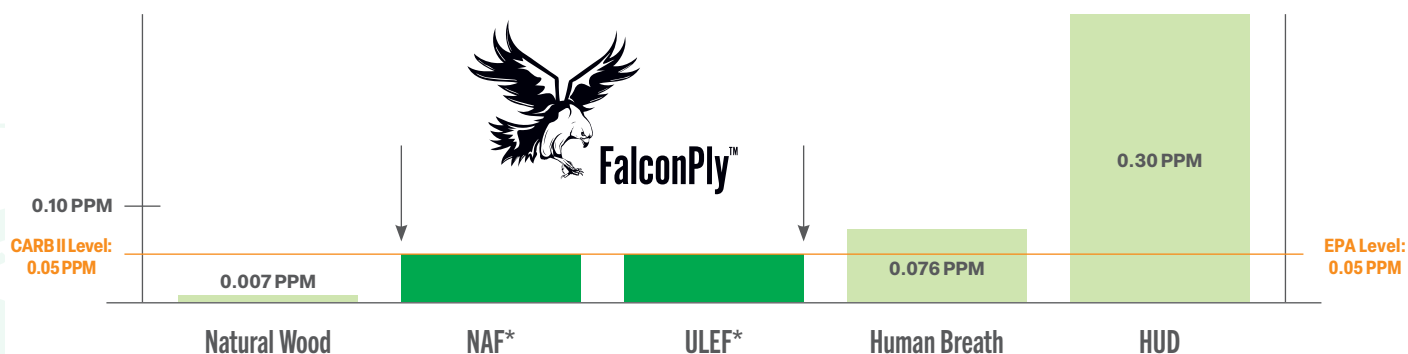
Our award-winning products are a testament to our environmental stewardship and leadership.

- Engineered with innovative EcoBind Resin
- CANFER Compliant
- Qualifies for LEED® Credit
- CARB/TSCA TITLE VI COMPLIANT
- FSC® Chain-of-Custody certified upon request

SAFE, LOW-EMITTING PANEL PRODUCTS

Our FalconPly hardwood plywood products have emission levels that approach the low levels from natural wood.

Formaldehyde Emissions in Parts Per Million (PPM)



FSC CHAIN-OF-CUSTODY CERTIFICATION

Along with its innovative adhesive that reduces VOC off-gassing, Timber Products' FalconPly features FSC Chain-of-Custody (CoC) Certification (SCS-CoC-000573). These exclusive designations certify that our hardwood and softwood are sourced only

from responsibly managed forestlands, and are meticulously tracked to ensure your order is certified and documented to meet green building program requirements.



HARDWOOD PLYWOOD

timberproducts.com

(800) 547-9520

305 S 4th Street
Springfield, OR 97477



©2025 Timber Products. All rights reserved. 4/25